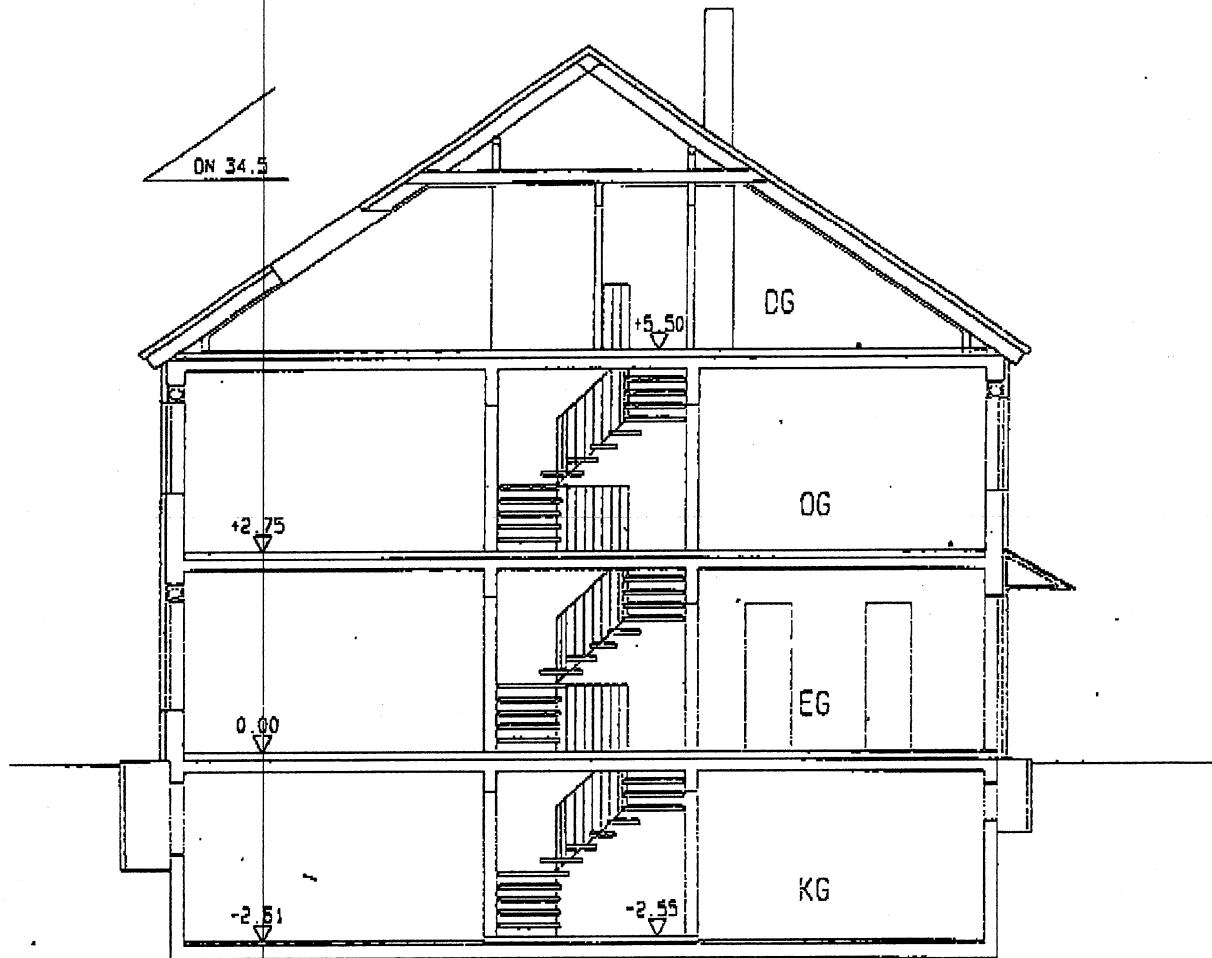


P 621 - Berlin Schöneiche -  
 Endhaus 600  
 1,2,3,4,5,6,7,8,9,10,11,12,13,  
 14,15,16,17,18,19,20,21,22,23,  
 39,40,41,42,43,44,45,50,55,56,  
 56,61,62,63,64,65,67

Verkleinerung unmaßstäblich



600  
 SCHNITT DURCH N-ENDHAUS

10/93  
 28. Okt. 1993